



SEGATRONCHI

CTR 710 GX

Max. (mm)		
		
710	660	470 x 535

4140 x 34 – 40 x 0,9 – 1,1

Max. log diameter	710 mm
Max. opening between blade guides	660 mm
Max. elevation of blade	630 mm
Min. blade height from support beam	30 mm
Max. depth of cut	450 mm
Max. log length (standard model)	2,1 m
Length track section	1 m / 3 m
Min. log length	1 m
Saw blade motor	13,2 kW
Vertical feed motor	-
Sawblade	4140 x 35-40 x 0,9-1,1 mm
Weight (standard model) inclusive accessories	525 kg
Weight (track section)	25 kg / 97 kg



DESCRIPTION

Feed into the cut and back – hand-operated
Arm height adjustment – manual
Control panel – on a mobile bridge
Log handling – manual

In contrast to the standard version the band saw is equipped with a professional Kohler two-cylinder four-stroke 13.4 kW (18 HP) petrol engine with electric start. Sufficient engine power ensures high performance of the machine even when processing logs of large diameters in all applications without the possibility of using an electric motor.

Smaller, but truly professional saw band in all respects. Execution of main technical parts, such as the running wheels in their mounts, construction of the saw band arm, engine and feeding systems, etc., are completely identical to those in CTR 800 series or in very powerful CTR 950 Hydraulik series.

Simple hand feed into the cut and back. Height is adjusted using a hand crank with adjustable scale. In this version of the machine the control panel is placed on a mobile bridge of the saw band arm. Thanks to that the operator has closer access to the workpiece when cutting.

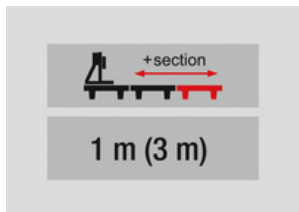
The massive saw band arm is borne on adjustable hard-chromium rods (for moving up and down) which ensure absolute accuracy of saw band arm movement and virtually unlimited service life, if the machine is lubricated regularly. The arm is fitted with running wheels made of high-quality grey cast iron with accurate balancing against vibrations. The wheel has a groove along its circumference. The groove holds a replaceable rubber-textile belt which creates an optimum contact area between the wheel and the saw band.

The sturdily mounted running wheel is powered through a wedge belt by a professional Kohler petrol engine. Centrifugal clutch enables an easy start of the engine and removal of the engine from the saw band when the cut had finished. The tensioning wheel system moves along a sturdy cast iron wedge guide with adjustable pressure bar, which allows highly accurate adjustment without any free travel even in long-term machine operation.

CTR series present the latest trends in construction of log saw bands with a special emphasis on maximum accuracy and long-term service life of the machine while ensuring minimum costs. The machines are designed in an original modular execution which allows easy replacement or adjustment of all main technical sections and their individual parts. This in the long-term perspective reduces the maintenance costs and service times and therefore production stoppages as well.

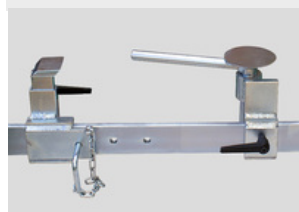
ACCESSORIES

ACCESSORIES – SPECIAL ACCESSORIES



Track section

1 meter – basic rails only
3 meter – contain in basic: 3x cross beams, 2x angle arms.
Another variable points: 3x material clamps.



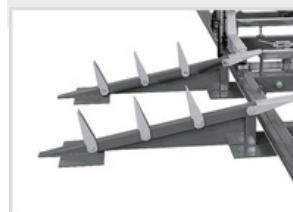
Material Clamp

Consists of a rail and a front and rear clamp.



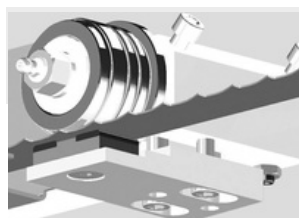
Hydraulic saw blade straining

Operated by a hydraulic hand pump with accurate pressure indication. The saw blade straining is more accurate and convenient.



Route for feeding logs

Provides easy and safe manipulation on machine cross beams with system of flexible stops.



Hard-metal Saw Band Guidance

It is located on the moving rail before the cut. It significantly improves saw band stability in the cut and also in its cleaning. Therefore it increases the machine productivity and cutting accuracy. This machine can be installed on an electrically controlled rail.



Lever for log loading

Serves as help with manipulation with logs on machine frame.



Hand Operated Grease Gun

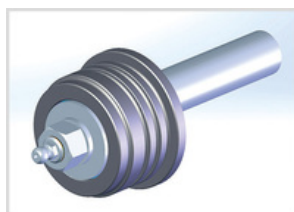
For regular maintenance of the machine according to the lubrication plan. Metal grease gun for 400g cartridges. Equipped with a flexible pressure tube.



Grease LV 2-3

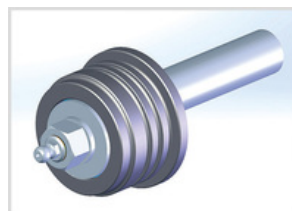
400g cartridge for the grease gun.

ACCESSORIES – CONSUMABLE PARTS



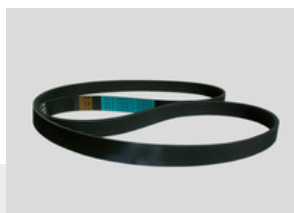
Saw Band Guide Pulley VK 35

Hardened ground pulley, bearings, shaft for a saw band 35 mm wide.



Saw Band Guide Pulley VK 40

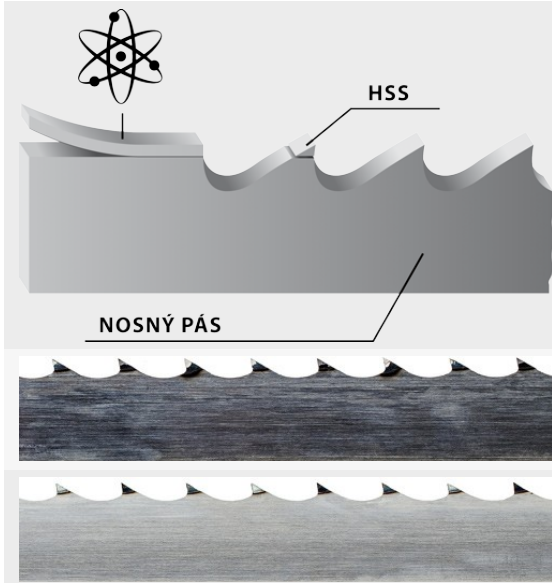
Hardened ground pulley, bearings, shaft for a saw band 40 mm wide.



Flat Running Wheel Belt GPK 1550

MAXWOOD

- The original saw blades MAXwood are available in a variety of types which enables you to process any kind of wood.
- The wide product range not only offers more affordable saw blades for low-volume cutting, but includes also saw blades for fully professional cutting and utmost performance.
- The foundation of all saw blades are top-quality German materials and precise workmanship. The quality of the saw blades is carefully monitored. All saw blades correspond to the strict ISO 9001 norm.
- We have added to our portfolio also an original Munkfors saw blade made by the world's leading manufacturer Uddeholm from Sweden.
- These saw blades are used in dozens of countries around the world. Any wood you cut, we will recommend you a saw blade that will fit your needs.



BiMetal

Saw blade with tool steel teeth - completely eliminates the need to sharpen the saw blade as well as frequent blade replacement. Use: soft, hard to extremely hard wood.

HSS

Bearing blade

Stellite

Saw blade with teeth made of Stellite. Tooth setting is completely unnecessary. Use: soft, hard to extremely hard wood.

Carbon spring steel

The most common saw blade for optimum price/performance ratio. Use: soft and hard wood.



Be careful when unpacking welded saw blades. They are in a shipping container in tensioned condition. Remove the saw blade cover only after fitting it onto the machine.